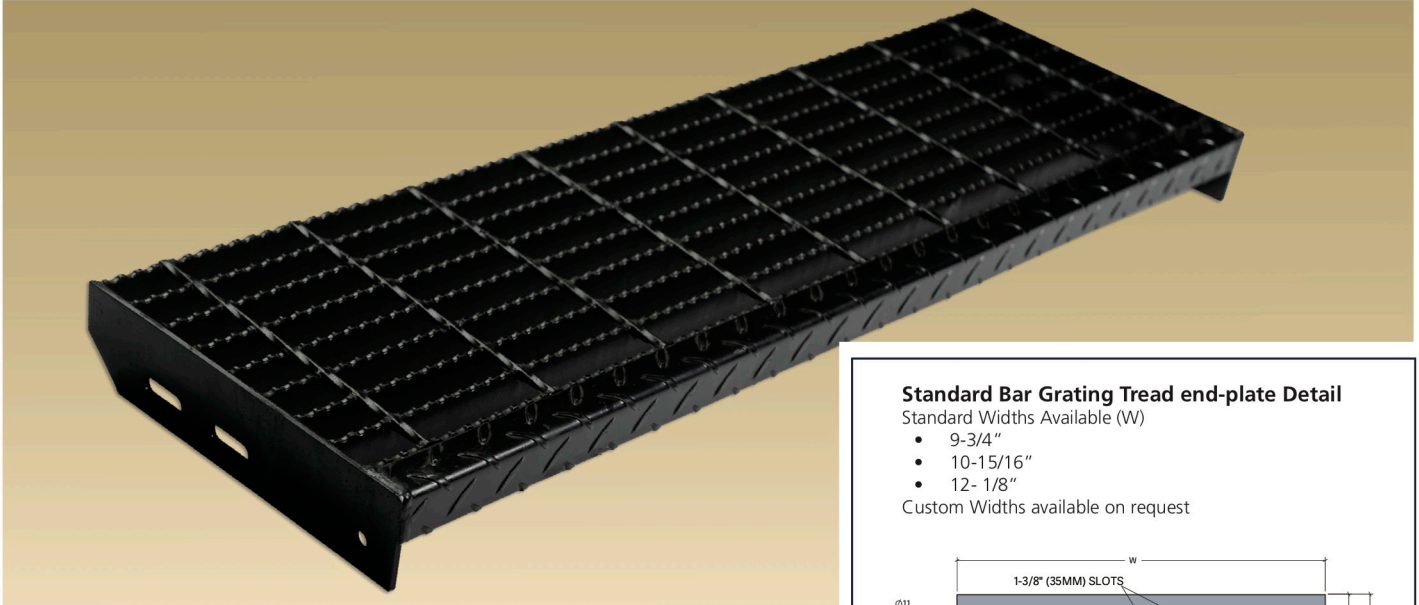


Bar Grating - Treads

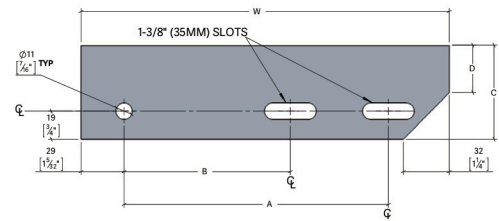


Standard Bar Grating Tread end-plate Detail

Standard Widths Available (W)

- 9-3/4"
- 10-15/16"
- 12- 1/8"

Custom Widths available on request



STANDARD END PLATE DIMENSIONS

# of Bars	Tread Width (W)		Outer Slot (A)		Inner Slot (B)	
	Metric (mm)	Imperial (in)	Metric (mm)	Imperial (in)	Metric (mm)	Imperial (in)
8	248	9-3/4	178	7	112	4-1/2
9	278	10-15/16	178	7	112	4-1/2
10	308	12-1/8	178	7	112	4-1/2

Grating Height		Dimension (C)		Dimension (D)		Dimension (E)	
Metric (mm)	Imperial (in)	Metric (mm)	Imperial (in)	Metric (mm)	Imperial (in)	Metric (mm)	Imperial (in)
Up to 32	Up to 1-1/4	64	2-1/2	32	1-1/4	5	3/16
38 to 44	1-1/2 to 1-3/4	76	3	44	1-3/4	6	3/16

STAIR TREAD WEIGHTS (LBS)							
MATERIAL	TREAD WIDTH (INCHES)	BEARING BAR SIZE					
		1" x 1/8"	1-1/4" x 1/8"	3/4" x 3/16"	1" x 3/16"	1-1/4" x 3/16"	1-1/2" x 3/16"
LB. PER LINEAL INCH OF TREAD LENGTH							
Steel	6-3/16	0.29	0.32	0.31	0.36	0.41	0.48
Steel	7-7/8	0.34	0.38	0.36	0.43	0.49	0.55
Steel	8-9/16	0.38	0.43	0.41	0.5	0.57	0.64
Steel	9-3/4	0.43	0.49	0.46	0.56	0.65	0.73
Steel	10-15/16	0.48	0.55	0.52	0.63	0.73	0.83
Steel	12-1/8	0.53	0.6	0.58	0.7	0.81	0.92
If galvanized steel - multiply lb. per lineal inch by a factor of 1.10							
Aluminum	6-3/16	0.10	0.11	0.10	0.12	0.14	0.16
Aluminum	7-7/8	0.11	0.13	0.12	0.14	0.16	0.18
Aluminum	8-9/16	0.13	0.14	0.14	0.17	0.19	0.21
Aluminum	9-3/4	0.14	0.16	0.15	0.18	0.21	0.24
Aluminum	10-15/16	0.16	0.18	0.17	0.21	0.24	0.27
Aluminum	12-1/8	0.17	0.20	0.19	0.23	0.27	0.30

MAXIMUM TREAD LENGTH (INCHES)							
MATERIAL	BEARING BAR SIZE	19-4		MATERIAL	BEARING BAR SIZE	19-4	
		1-3/16" o/c				1-3/16" o/c	
		PLAIN	SERRATED			PLAIN	SERRATED
Steel	1 x 1/8	31	27	Aluminum	1 x 1/8	24	21
Steel	1 x 3/16	41	34	Aluminum	1 x 3/16	28	26
Steel	1 x 1/4	49	42	Aluminum	1 x 1/4	31	27
Steel	1-1/4 x 1/8	43	37	Aluminum	1-1/4 x 1/8	30	28
Steel	1-1/4 x 3/16	56	50	Aluminum	1-1/4 x 3/16	34	31
Steel	1-1/4 x 1/4	63	56	Aluminum	1-1/4 x 1/4	38	34
Steel	1-1/2 x 1/8	56	49	Aluminum	1-1/2 x 1/8	36	33
Steel	1-1/2 x 3/16	66	63	Aluminum	1-1/2 x 3/16	42	38
Steel	1-1/2 x 1/4	66	66	Aluminum	1-1/2 x 1/4	47	43
Steel	1-3/4 x 3/16	66	66	Aluminum	1-3/4 x 3/16	51	46
Steel	1-3/4 x 1/4	74	67	Aluminum	1-3/4 x 1/4	58	52
Steel	2 x 3/16	78	72	Aluminum	2 x 3/16	61	56
Steel	2 x 1/4	89	82	Aluminum	2 x 1/4	66	63
Steel	2-1/4 x 3/16	92	85	Aluminum	2-1/4 x 3/16	66	66
Steel	2-1/4 x 1/4	106	97	Aluminum	2-1/4 x 1/4	66	66
Steel	2-1/2 x 3/16	107	100	Aluminum	2-1/2 x 3/16	66	66
Steel	2-1/2 x 1/4	123	114	Aluminum	2-1/2 x 1/4	73	67

- Stair treads supplied with 1/4" x 3/16" plain or serrated 19W4 grating.
- Complete with checker plate nosing and standard end plates.
- Available in bare, painted and galvanized.
- Aluminum and Stainless Steel available.

BAR TO BAR DIMENSIONS (INCHES)

# OF BARS	BAR THICKNESS				
	0.125	0.1875	0.250	0.313	0.375
DISTANCE FROM BAR TO OUTSIDE OF NOSING					
2	2.5625	2.6250	2.6875	2.7500	2.8125
3	3.7500	3.8125	3.8750	3.9375	4.0000
4	4.9375	5.0000	5.0625	5.1250	5.1875
5	6.1250	6.1875	6.2500	6.3125	6.3750
6	7.3125	7.3750	7.4375	7.5000	7.5625
7	8.5000	8.5625	8.6250	8.6875	8.7500
8	9.6875	9.7500	9.8125	9.8750	9.9375
9	10.8750	10.9375	11.0000	11.0625	11.1250
10	12.0625	12.1250	12.1875	12.2500	12.3125