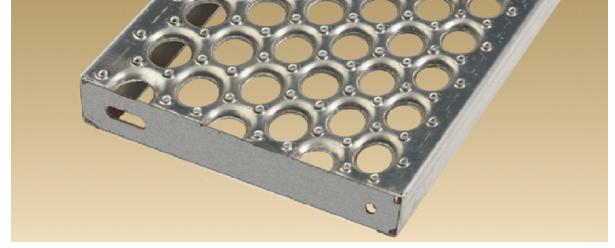


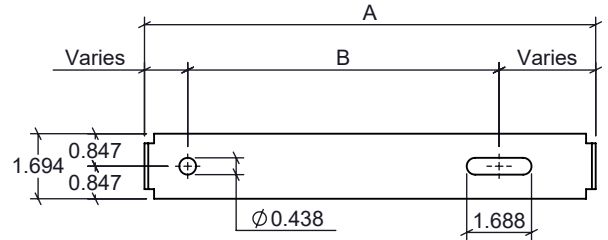
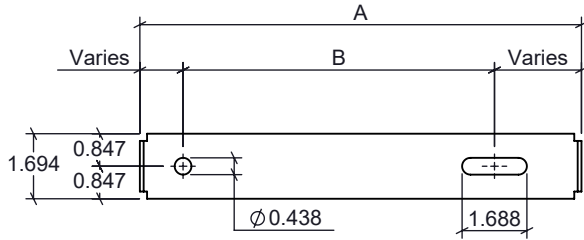


ACCURATE
SCREEN & GRATING

CHANNEL GRATING - TREADS



STANDARD CHANNEL GRATING TREAD END PLATE DETAIL



VANCOUVER

19082-28th Avenue
Surrey, BC
Canada V3S 6M3
TF: 877.687.3488

CALGARY

5751-57th Street SE
Calgary, AB
Canada T2C 5M2
TF: 877.857.0323

EDMONTON

#54-1015 Eby Road SW
Edmonton, AB
Canada T6X 2N9
TF: 877.857.0323

TORONTO

#5-5655 Kennedy Rd
Mississauga, ON
Canada L4Z 3E1
TF: 877.564.3381

MONTREAL

440 Rue Stinson
Saint Laurent, QC
Canada H4N 2E9
TF: 855.325.3826

Standard 1-1/2" Diamond Channel End Plate			
Tread Width	Height	Dimension A	Dimension B
IMPERIAL (IN)	IMPERIAL (IN)	IMPERIAL (IN)	IMPERIAL (IN)
5"	1.694"	4.50"	1.614"
7"	1.694"	6.75"	3.504"
10"	1.694"	9.25"	5.866"
12"	1.694"	11.50"	8.110"

Standard 1-1/2" Round Channel End Plate			
Tread Width	Height	Dimension A	Dimension B
IMPERIAL (IN)	IMPERIAL (IN)	IMPERIAL (IN)	IMPERIAL (IN)
5"	1.694"	4.75"	1.614"
7"	1.694"	6.75"	3.504"
10"	1.694"	9.75"	5.866"
12"	1.694"	11.75"	8.110"

DIAMOND CHANNEL STAIR TREAD - LOAD TABLES - GALV. STEEL																	
GAUGE		4-3/4"				7"				9-1/2"				11-3/4"			
		14		12		14		12		14		12		14		12	
SPAN	HEIGHT	U	C	U	C	U	C	U	C	U	C	U	C	U	C	U	C
24"	1.5"	1191	472	1576	624	761	443	1006	587	549	435	750	595	434	425	575	563
	2"	1978	783	2513	995	1262	737	1604	936	911	604	1158	917	721	573	916	897
30"	1.5"	764	378	1011	500	488	356	645	470	353	349	481	476	278	342	369	452
	2"	1268	611	1611	797	810	590	1029	750	584	578	742	734	463	566	587	719
36"	1.5"	532	315	703	418	340	30	450	393	245	300	335	398	194	300	258	378
	2"	882	524	1121	665	563	492	716	626	407	483	517	614	322	473	409	601
48"	2"	498	394	633	501	318	372	404	472	230	364	292	463	182	356	232	454

DIAMOND CHANNEL STAIR TREAD - LOAD TABLES - ALUMINUM & 304 STAINLESS																	
GAUGE		4-3/4"				7"				9-1/2"				11-3/4"			
		ALUMINUM .080"		ALUMINUM .080"		ALUMINUM .080"		ALUMINUM .080"		ALUMINUM .080"		STAINLESS 304		ALUMINUM .080"		STAINLESS 304	
SPAN	HEIGHT	U	C	U	C	U	C	U	C	U	C	U	C	U	C	U	C
24"	2"	1328	526	862	503	607	481	610	483	396	388	394	386	253	388	252	381
30"	2"	850	420	551	402	388	392	390	387	253	388	252	381	176	321	175	319
36"	2"	590	350	383	335	270	327	271	323	176	321	175	319	99	241	98	241
48"	2"	332	253	215	252	152	245	152	244	99	241	98	241				

ROUND CHANNEL STAIR TREAD - LOAD TABLES - GALV. STEEL																	
GAUGE		5"				7"				10"				12"			
		13		11		13		11		13		11		13		11	
SPAN	HEIGHT	U	C	U	C	U	C	U	C	U	C	U	C	U	C	U	C
24"	1.5"	1947	811	2832	1172	1489	793	1921	1098	1128	625	1343	861	991	866	1118	1118
	2"	2943	973	4278	1738	2229	793	2995	1098	1500	625	2067	861	1457	866	1875	1362
36"	1.5"	868	542	1259	781	664	581	856	749	501	625	338	564	442	663	499	748
	2"	1311	819	1901	1159	993	793	1333	1098	748	625	975	861	649	866	835	1253
48"	2"	739	616	1070	869	560	654	752	877	422	625	550	861	367	733	471	932

ROUND CHANNEL STAIR TREAD - LOAD TABLES - ALUMINUM & 304 STAINLESS																	
GAUGE		5"				7"				10"				12"			
		ALUMINUM .125ga.		ALUMINUM .125ga.		ALUMINUM .125ga.		ALUMINUM .125ga.		ALUMINUM .125ga.		STAINLESS 304		ALUMINUM .125ga.		STAINLESS 304	
SPAN	HEIGHT	U	C	U	C	U	C	U	C	U	C	U	C	U	C	U	C
24"	2"	2479	1033	1984	1157	1278	533	946	394	1245	839	871	435	554	831	417	435
36"	2"	1102	689	882	771	605	533	529	394	554	831	417	435	312	624	236	435
48"	2"	620	516	496	579	341	533	298	394	312	624	236	435				

LOADS AND DEFLECTIONS ARE THEORETICAL AND BASED ON STATIC LOADING.

NOTE: ALL DRAWINGS ARE THE PROPERTY OF ACCURATE SCREEN LTD./1238229 ALBERTA INC.